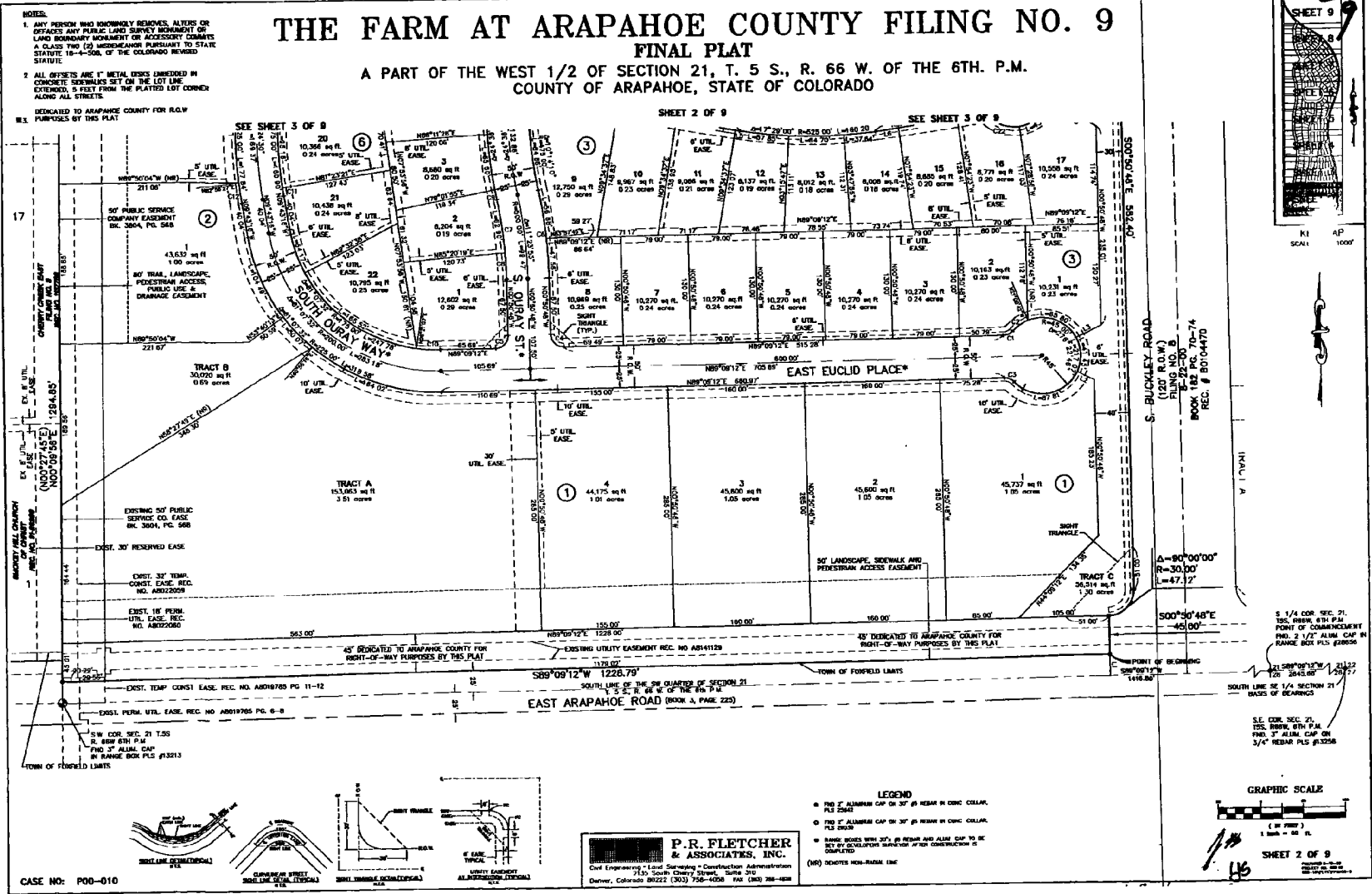


120684.002

184-59

2/9



120684.003

184-60

3/19

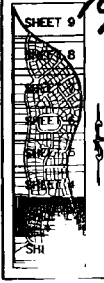
- NOTES.**
1. ANY PERSON WHO KNOWINGLY REMOVES, ALTERS OR DEFACTO ANY PUBLIC LAND SURVEY MONUMENT OR LAND BOUNDARY MONUMENT OR ACCESSORY CORNER A CLASS TWO (2) MONUMENT PURSUANT TO STATE STATUTE 18-4-208, OF THE COLORADO REVISED STATUTE.
 2. ALL OFFSETS ARE 1" METAL DISKS EMBOSSED IN CONCRETE SIDEWALKS SET ON THE LOT LINE. EXTENDED 5 FEET FROM THE PLATTED LOT CORNER ALONG ALL STREETS.
 3. DEDICATED TO ARAPAHOE COUNTY FOR R.O.W. PURPOSES BY THIS PLAT.

THE FARM AT ARAPAHOE COUNTY FILING NO. 9

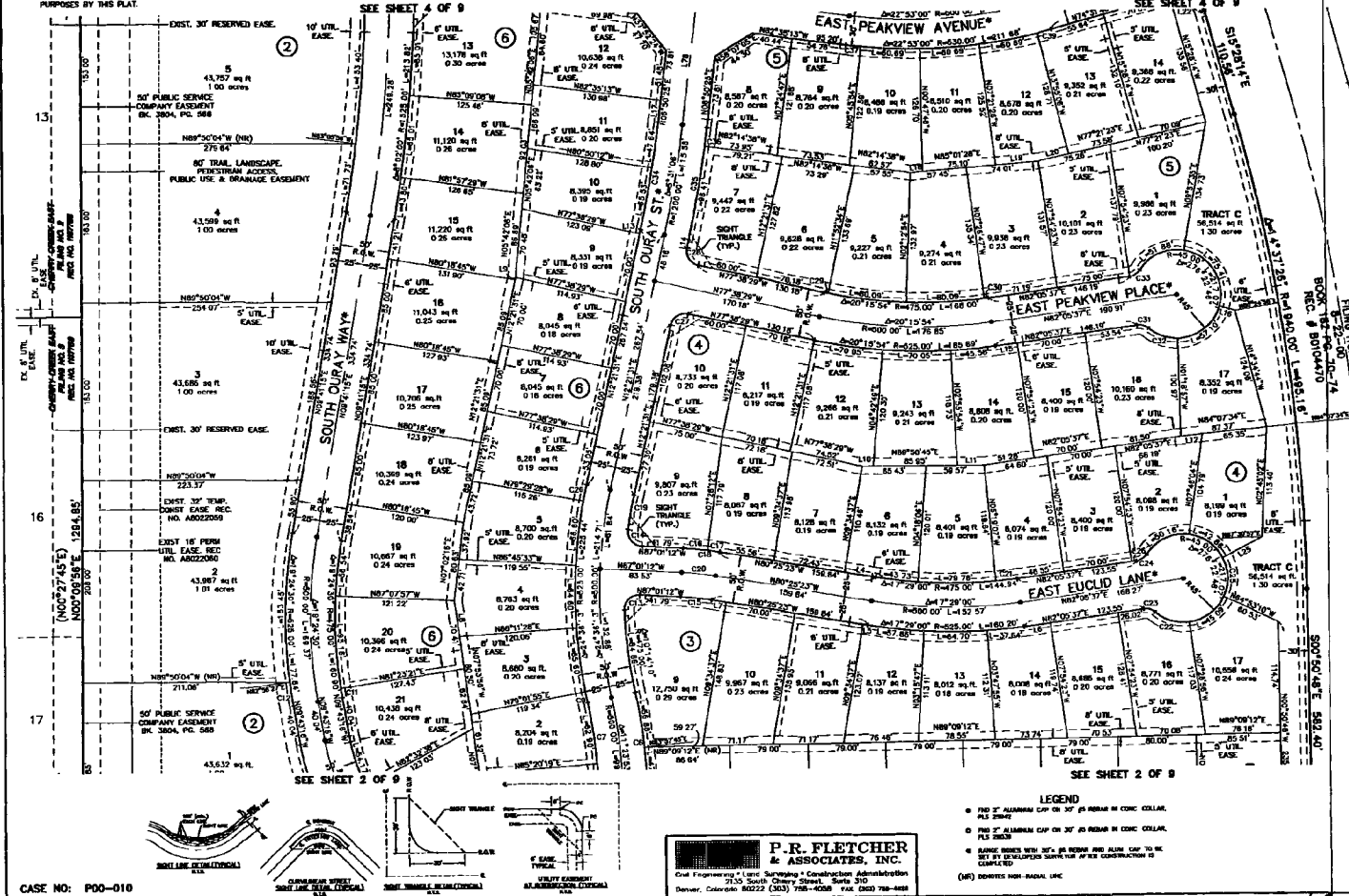
FINAL PLAT

A PART OF THE WEST 1/2 OF SECTION 21, T. 5 S., R. 66 W. OF THE 6TH. P.M.
COUNTY OF ARAPAHOE, STATE OF COLORADO

SHEET 3 OF 9

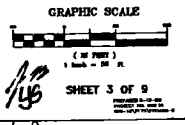


KL MAP
SCALE: 1" = 1000'



- LEGEND**
- 1/2" ALUMINUM CUP OR 3/8" IRON IN CONIC COLLAR, 1/4" DIA.
 - 1/2" ALUMINUM CUP OR 3/8" IRON IN CONIC COLLAR, 1/2" DIA.
 - ▲ 1/2" ALUMINUM CUP OR 3/8" IRON AND ALUM. CAP TO BE SET BY SURVEYOR SOME TIME AFTER COMPLETION OF COMPLETE.
 - (NR) DENOTES NON-RADIAL LINE.

P. R. FLETCHER & ASSOCIATES, INC.
Civil Engineering • Land Surveying • Construction Administration
2710 South Cherry Street, Suite 200
Denver, Colorado 80222 (303) 758-4058 Fax (303) 758-4888



CASE NO: P00-010

SHEET 3 OF 9

120684.004

184-61

4/9

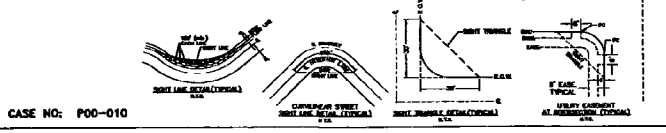
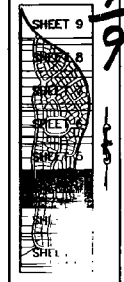
NOTES

- ANY PERSON WHO KNOWINGLY REMOVES, ALTERS OR DEFEATS ANY PUBLIC LAND SURVEY MONUMENT OR LAND BOUNDARY MONUMENT OR ACCESSORY COMBATS A CLASS TWO (2) MISDEMEANOR PURSUANT TO STATE STATUTE 18-4-208, OF THE COLORADO REVISED STATUTE.
- ALL OFFSETS ARE 1" METAL DISKS EMBEDDED IN CONCRETE CONCRETE SET ON THE LOT LINE EXTENDED, 5 FEET FROM THE PLATTED LOT CORNER ALONG ALL STREETS.
- DEVIATED TO ARAPAHOE COUNTY FOR R.O.W. PURPOSES BY THIS PLAT.

THE FARM AT ARAPAHOE COUNTY FILING NO. 9

FINAL PLAT

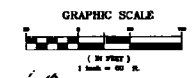
A PART OF THE WEST 1/2 OF SECTION 21, T. 5 S., R. 66 W. OF THE 6TH. P.M.
 COUNTY OF ARAPAHOE, STATE OF COLORADO



P. R. FLETCHER & ASSOCIATES, INC.
 Civil Engineering & Land Surveying - Construction Administration
 2125 South Cherry Street, Suite 210
 Denver, Colorado 80222 (303) 758-4078 FAX (303) 758-4088

LEGEND

- 2" ALUMINUM CAP OR 3/4" IR BARR IN CONC. COLLAR, PLS. SIGN
- 2" ALUMINUM CAP OR 3/4" IR BARR IN CONC. COLLAR, PLS. SIGN
- PAVING SIDES WITH 3/4" IR BARR AND ALUM. CAP TO BE SET BY DEVELOPER SURVEYOR AFTER CONSTRUCTION IS COMPLETE
- (NR) DENOTES SON BUBBLE LANE



SHEET 4 OF 9

120684.005

184-62

